



Subject: Addressing Complaint of Water Leaks from Area Around Door Mirror

Application: 1995– 900 Convertibles up to and including VIN Serial No. T7004728

CATEGORY		Body	
SECTION	8	PAGE	155
ISSUE	04/97–0760	CODE	811

Supersedes PSI 02/97–0737

Should a customer complain that they have a water leak in the area around the door mirror on their 1995 or later 900 Convertible, a new gasket for the door mirror base can be installed. This new gasket has better sealing properties and was introduced on current production models.

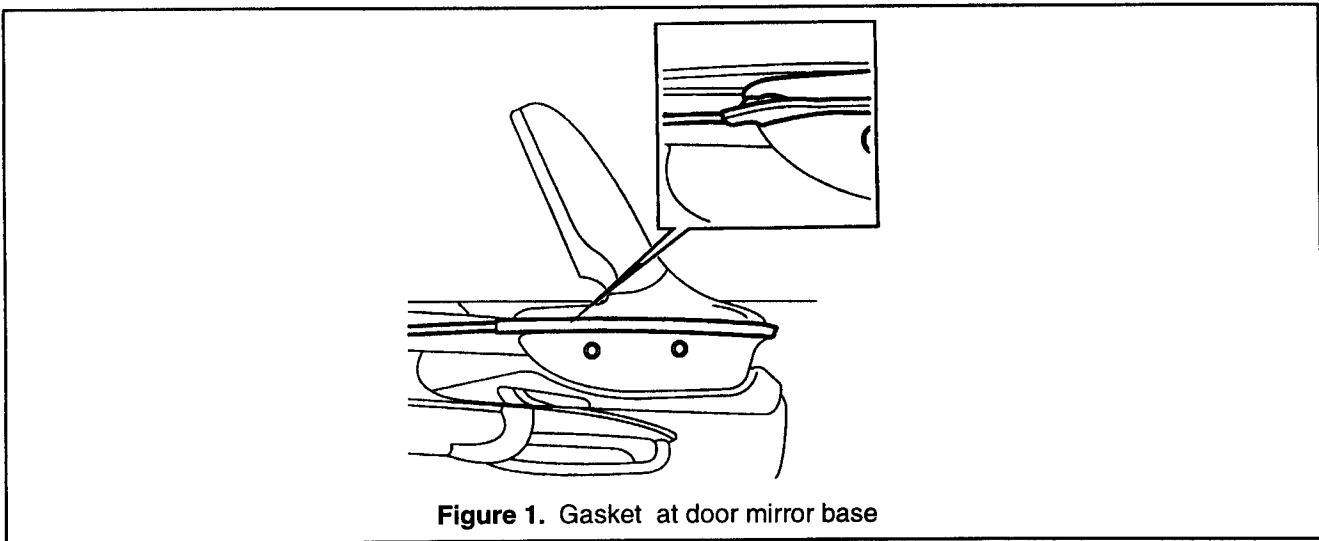


Figure 1. Gasket at door mirror base

Cars Affected:

1995 and later 900 Convertibles up to and including VIN Serial No. T7004728

Parts:

- Gasket, door mirror base, RH 46 97 777
- Gasket, door mirror base, LH 46 97 769
- Rivet (2) 43 45 872
- 3M Super Weatherstrip Adhesive 02 45 779

Supplies:

- Teroson cleaner 30 15 815
- Butyl tape
- Primer
- Cavity sealant
- Paint
- 8mm drill bit

Saab Cars USA, Inc. Service bulletins are intended for use by professional technicians, NOT a "do-it-yourselfer". They are written to inform these technicians of conditions that may occur on some vehicles, or to provide information that could assist in the proper service of a vehicle. Properly trained technicians have the equipment, tools, safety instructions, and know-how to do a job properly and safely. If a condition is described, DO NOT assume that the bulletin applies to your vehicle, or that your vehicle will have the condition. See your authorized Saab Dealer for information on whether your vehicle may benefit from the information.

Action:

Raise the car and check whether the gasket and window form an unbroken line.

If they do not, the front edge must be bent upward slightly when the door mirror has been removed.

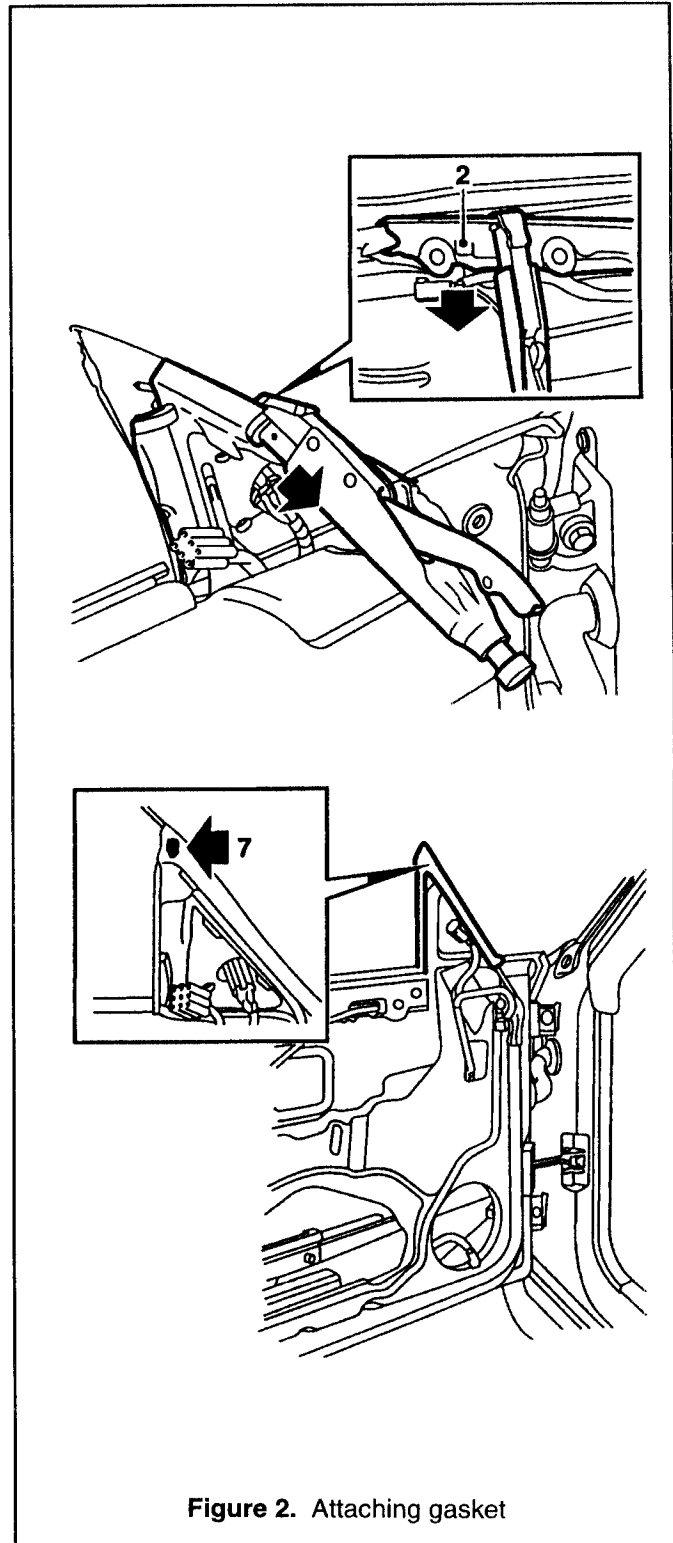
1. Remove the door mirror.
2. Loosen the front edge of the gasket and bend the edge of the metal (**only if necessary**).
3. Remove the door trim.
4. Remove the inner window seal (for modification before refitting).
5. Loosen the outer window seal at the front.
6. Remove the door mirror base sealing gasket.

7. Glue the new gasket to the tip of the metal flange. Use 3M Super Weatherstrip Adhesive, P/N 02 45 779.

Important

Wipe the window channel clean before applying the adhesive.

8. Press the gasket into the window channel.



9. Roll the window up and pull the gasket down so that it seals around the front edge of the window.

10. Lift up the lower part of the gasket and apply 3M Super Weatherstrip Adhesive, P/N 02 45 779.

11. Glue the gasket in place.

12. Press the front part home and make a punch mark where the hole for the rivet is to be drilled.

13. Using an 8mm drill bit, drill a hole where marked. Deburr the hole and remove all drill filings and flakes of paint. Clean with Teroson's FL Cleaner, P/N 30 15 815 or similar product. Apply paint primer. Apply finish paint. Apply cavity sealant on internal surfaces.

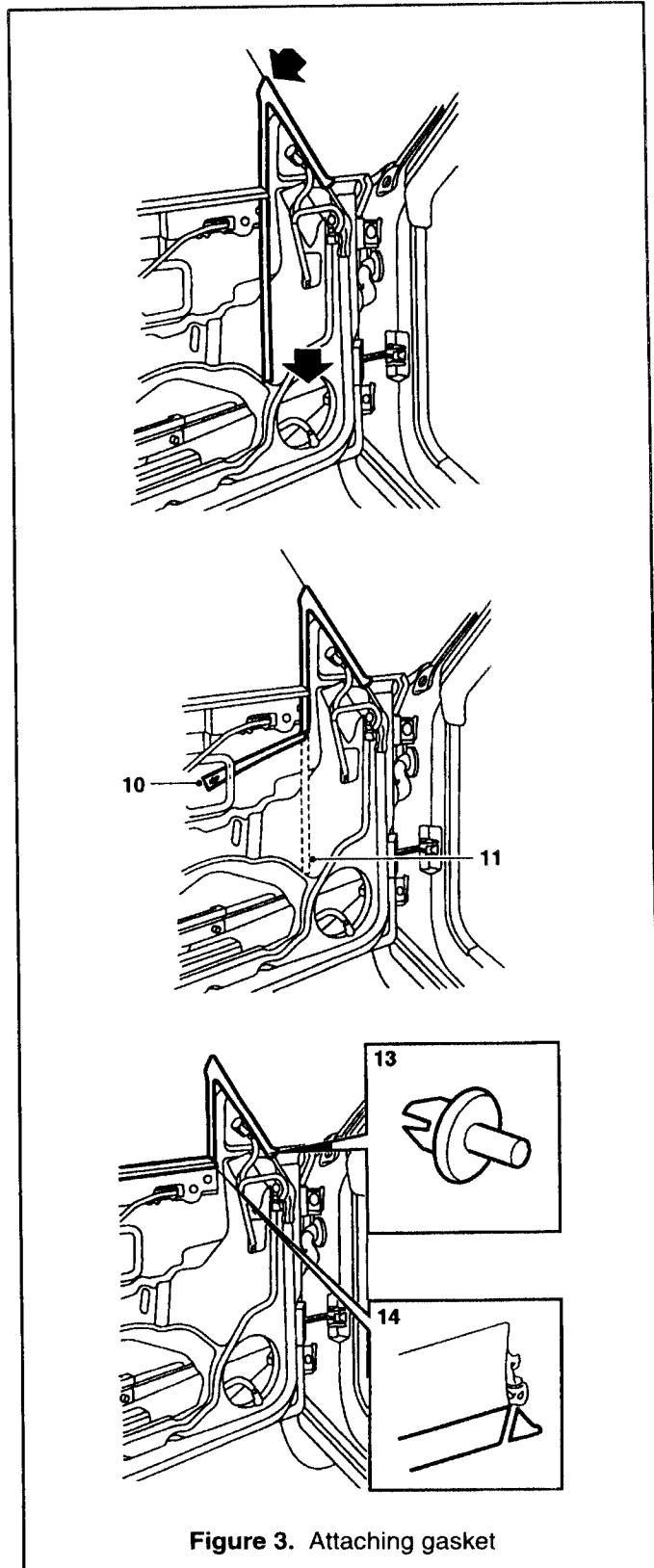
Fit the rivet.

14. Modify the inner window seal by cutting off the tip which otherwise enters the gasket and can lead water into the interior.

15. Fit the inner and outer window seals on the door.

16. Check that holes have been drilled in the door pockets according to PSI 04/9-0754, p. 15: "Putting Drain Holes in Door Pockets".

17. Fit the door mirror in place.



18. Using a hose, spray water onto the mirror diagonally from above and check to make sure no leakage occurs.

Never use a high-pressure water supply when spraying the mirror.

19. If leakage still occurs, decrease the pressure against the window by loosening the windshield seal and bending the edge of the A-pillar slightly inward. Use tool, P/N J42661. (Issued as new Essential Special Tool on or about June 15, 1997. Additional quantities may be ordered directly from Kent-Moore at 1-800-345-2233.)

20. Stick butyl tape on the A-pillar facing the inside of the windshield seal and refit the seal.

Warranty Information:

To resolve a customer complaint for a vehicle in warranty, submit a claim using the following information:

Failure code: 84370-56-3/4-01-01

Labor operation: 84370 0.2 per side

Straight time: 0.5 per side

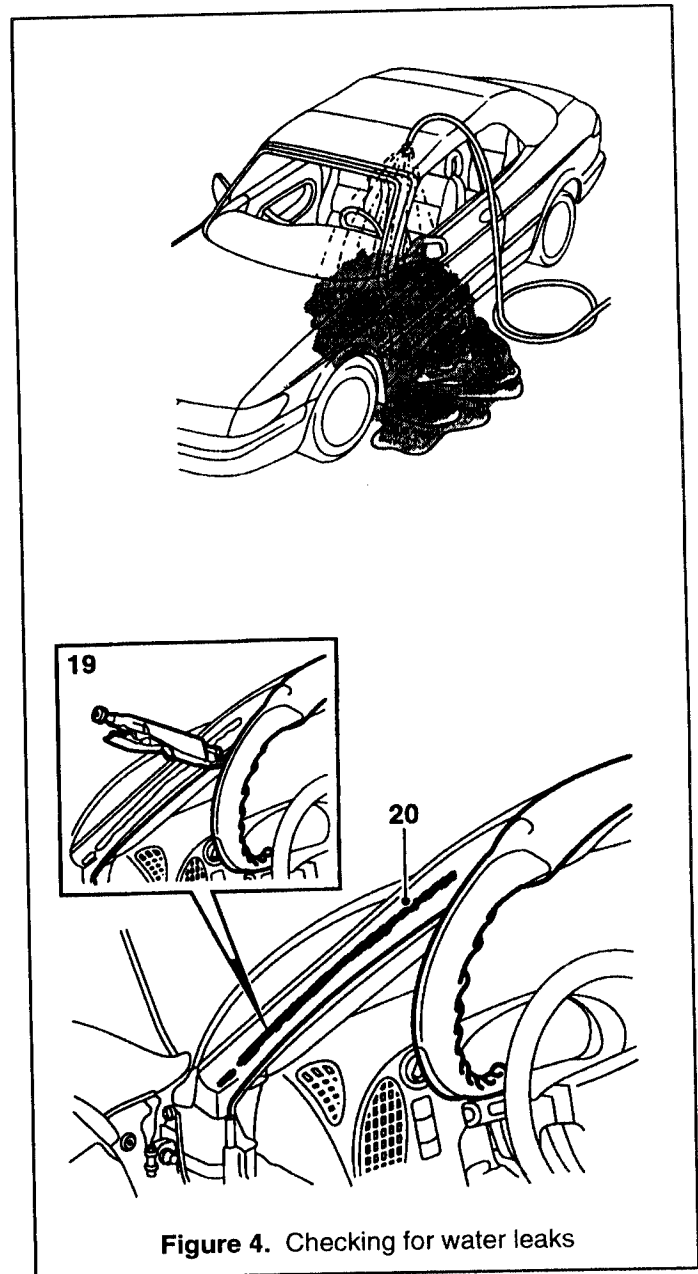


Figure 4. Checking for water leaks